

BASIC DETAILS25287--ST SOLDIER ELITE CONV SCH, JANDIALA GURU PUNJAB
Dated : 23/06/2018

SCHOOL NAME	ST SOLDIER ELITE CONV SCH, JANDIALA GURU PUNJAB	SCHOOL CODE	25287
ADDRESS	ST SOLDIER ELITE CONVENT SCHOOL,JYOTISAR COLONY, JANDIALA GURU,DISTT AMRITSAR	AFFILIATION CODE	1630525
PRINCIPAL	MRS AMARPREET KAUR	PRINCIPAL'S CONTACT NUMBER	9855078318
PRINCIPAL'S EMAIL ID	ebadit.cute@gmail.com	PRINCIPAL'S RETIREMENT DATE	31/03/2033
SCHOOL'S CONTACT NUMBER	91-9872111347	SCHOOL'S EMAIL ID	stsoldierschool@yahoo.com
SCHOOL'S WEBSITE	www.ssecschool.com	SCHOOL'S FAX NUMBER	000000000
LANDMARK NEAR SCHOOL	Gurdwara Jyotisar Colony	YEAR OF ESTABLISHMENT	2004
AFFILIATION VALIDITY	2008 TO 2019	AFFILIATION STATUS	REGULAR
NAME OF THE TRUST/SOCIETY/COMPANY REGISTERED WITH	ST SOLDIER DAY BOARDING SCHOOL SOCIETY	REGISTRATION DATE	27/08/1999
SOCIETY REGISTRATION NUMBER	ASR/19 OF 1999-2000	REGISTRATION VALIDITY	31/03/2019
NOC ISSUING AUTHORITY	PUNJAB GOVERNMENT	NOC ISSUING DATE	24/06/2008
NO OBJECTION CERTIFICATE	VIEW (PdfHandler.aspx? FileName=G:\cbse\2018\oasisdemo\noc\25287.PDF)	NON PROPRIETY CHARACTER AFFIDAVIT/NON PROFIT COMPANY AFFIDAVIT	VIEW (PdfHandler.aspx? FileName=G:\cbse\2018\oasisdemo\affidavit\25287.PDF)

FACULTY DETAILS25287--ST SOLDIER ELITE CONV SCH, JANDIALA GURU PUNJAB
Dated : 23/06/2018

TOTAL NUMBER OF TEACHERS (ALL CLASSES)	72	NUMBER OF PGTs	25
NUMBER OF TGTs	19	NUMBER OF PRTs	26
NUMBER OF PETs	2	OTHER NON-TEACHING STAFF	8
NUMBER OF MANDATORY TRAINING QUALIFIED TEACHERS	0	NUMBER OF TRAININGS ATTENDED BY FACULTY SINCE LAST YEAR	2

STUDENT DETAILS25287--ST SOLDIER ELITE CONV SCH, JANDIALA GURU PUNJAB
Dated : 23/06/2018

CLASS	TOTAL NUMBER OF SECTIONS	TOTAL NUMBER OF INTAKE	TOTAL NUMBER OF STUDENTS
1	4	141	141
2	5	152	152
3	4	143	143
4	4	145	145
5	4	156	156
6	4	150	150
7	4	153	153
8	4	153	153
9	4	148	148
10	4	146	146
11	7	223	223
12	6	174	174

ACADEMIC DETAILS

25287--ST SOLDIER ELITE CONV SCH, JANDIALA GURU PUNJAB

Dated : 23/06/2018

SUBJECTS OFFERED FOR CLASS 10	SUBJECTS OFFERED FOR CLASS 12
004---PUNJABI 041---MATHEMATICS 085---HINDI COURSE-B 086---SCIENCE 087---SOCIAL SCIENCE 101---ENGLISH COMM. 165---FOUNDATION OF I T 531---LITERARY AND CREATIVE SKILLS 532---SCIENCE SKILLS 541---SPORTS/INDIGENOUS SPORTS 547---FIRST AID	041---MATHEMATICS 044---BIOLOGY 301---ENGLISH CORE 048---PHYSICAL EDUCATION 054---BUSINESS STUDIES 055---ACCOUNTANCY 083---COMPUTER SCIENCE 104---PUNJABI 030---ECONOMICS 042---PHYSICS 043---CHEMISTRY 500---WORK EXPERIENCE 502---PHY & HEALTH EDUCA 503---GENERAL STUDIES

INFRASTRUCTURE DETAILS25287--ST SOLDIER ELITE CONV SCH, JANDIALA GURU PUNJAB
Dated : 23/06/2018

TOTAL NUMBER OF SITES OF SCHOOL	1	TOTAL NUMBER OF BUILDING BLOCKS	3
TOTAL AREA OF SCHOOL IN SQUARE METRES	9430	TOTAL NUMBER OF PLAYGROUNDS	4
TOTAL AREA OF PLAYGROUND IN SQUARE METRES	7975	TOTAL NUMBER OF ROOMS	101
TOTAL NUMBER OF SMALL-SIZED ROOMS	21	TOTAL NUMBER OF MEDIUM-SIZED ROOMS	69
TOTAL NUMBER OF LARGE-SIZED ROOMS	11	TOTAL NUMBER OF MALE REST ROOM	2
TOTAL NUMBER OF FEMALE REST ROOM	2	NUMBER OF GIRLS' TOILET	20
NUMBER OF BOYS' TOILET	18	NUMBER OF TOILETS FOR DIFFERENTLY ABLED PERSONS	2
NUMBER OF WASHROOMS FOR FEMALE STAFF	3	NUMBER OF WASHROOMS FOR MALE STAFF	3
TOTAL NUMBER OF LIBRARIES	1	NUMBER OF LABORATORIES	9
TOTAL NUMBER OF STUDENT CANTEENS	1	TOTAL NUMBER OF STAFF CANTEENS	1
NUMBER OF WATER PURIFIERS/ROs	4	NUMBER OF AUDITORIUMS	0
NUMBER OF LIFTS/ELEVATORS	0	NUMBER OF DIGITAL CLASSROOMS	42

DOES THE SCHOOL HAS HOSTEL FACILITY	NO	DOES THE SCHOOL HAS GUARDS EMPLOYED FOR SAFETY	YES
DOES THE SCHOOL HAS FIRE EXTINGUISHERS	YES	DOES THE SCHOOL HAS SPRINKLERS	NO
DOES THE SCHOOL HAS CCTV CAMERAS INSTALLED?	YES	IS THE SCHOOL EXAMINATION CENTER OF CBSE?	NO
TOTAL NUMBER OF COMPUTERS IN ALL COMPUTER LAB	40	DOES THE SCHOOL HAS WEB SERVERS	YES
DOES THE SCHOOL HAS A BOUNDARY WALL?	YES	IS YOUR SCHOOL BARRIER FREE/ HAS RAMPS?	NO
DOES THE SCHOOL HAS CLINIC FACILITY?	YES	DOES THE SCHOOL HAS A STRONG ROOM?	NO
DOES THE SCHOOL HAS A GYMNASIUM?	NO	IS YOUR SCHOOL WI-FI ENABLED?	YES
PROVISION OF WEB BASED LEARNING PROGRAMS?	NO	DOES THE SCHOOL HAS FIRE ALARMS?	YES
DOES THE SCHOOL HAS SPORTS FACILITY?	YES	DOES THE SCHOOL HAS INDOOR GAMES FACILITY?	NO
DOES THE SCHOOL HAS A SWIMMING POOL?	NO	DOES THE SCHOOL HAS DANCE/MUSIC FACILITY?	YES
TOTAL NUMBER OF BUSES OWNED	10	TOTAL NUMBER OF BUSES HIRED	10
TOTAL NUMBER OF VANS/MATADORS	0	TOTAL NUMBER OF DRIVERS	20
NUMBER OF FEMALE ATTENDANTS FOR BUS DUTY	20	NUMBER OF ACTIVITY ROOMS	3

NAME OF TRANSPORT COORDINATOR	BALBIR SINGH	TRANSPORT COORDINATOR CONTACT	9914328532
BUILDING SAFETY CERTIFICATE	VIEW (PdfHandler.aspx? FileName=G:\cbse\2018\oasisdemo\building\25287.PDF)	TRANSPORT SAFETY CERTIFICATE	VIEW (PdfHandler.aspx? FileName=G:\cbse\2018\oasisdemo\transport\25287.PDF)

LOCATION DETAILS25287--ST SOLDIER ELITE CONV SCH, JANDIALA GURU PUNJAB
Dated : 23/06/2018

NEAREST NATIONALISED BANK	PUNJAB AND SIND BANK	DISTANCE OF BANK FROM SCHOOL IN KM	1
NEAREST BUS STATION	JANDIALA GURU	DISTANCE OF BUS TERMINAL FROM SCHOOL IN KM	1
NEAREST RAILWAY STATION	JANDIALA GURU	DISTANCE OF RAILWAY STATION FROM SCHOOL IN KM	4
NEAREST AIRPORT	GURU RAM DAAS AIRPORT	DISTANCE OF AIRPORT FROM SCHOOL IN KM	30
NEAREST HOSPITAL	MANNAWALA HOSPITAL	DISTANCE OF HOSPITAL FROM SCHOOL IN KM	6
NEAREST POLICE STATION	JANDIALA GURU	DISTANCE OF POLICE STATION FROM SCHOOL IN KM	1
NEAREST METRO STATION		DISTANCE OF METRO FROM SCHOOL IN KM	

OTHER VITAL INFORMATION25287--ST SOLDIER ELITE CONV SCH, JANDIALA GURU PUNJAB
Dated : 23/06/2018

10th BOARD PASS PERCENTAGE (2014/2015/2016)	99.53/100/100	12th BOARD PASS PERCENTAGE (2014/2015/2016)	97.14/83.09/97.95
NAME OF WELLNESS/ACTIVITY TEACHER	YES	NAME OF GRIEVANCE/COMPLAINT REDRESSAL OFFICER	vriti Dhugga
CONTACT NUMBER OF GRIEVANCE/COMPLAINT REDRESSAL OFFICER	9780055058	EMAIL ID OF GRIEVANCE/COMPLAINT REDRESSAL OFFICER	vritidhugga@gmail.com
NAME OF HEAD OF SEXUAL HARASSMENT COMMITTEE	Gurpreet Kaur	CONTACT NUMBER OF HEAD OF SEXUAL HARASSMENT COMMITTEE	9815691700
EMAIL ID OF HEAD OF SEXUAL HARASSMENT COMMITTEE	gunsharan@gmail.com	NAME OF CONTACT PERSON IN CASE OF EMERGENCY	Mangal Singh Kishanpuri
CONTACT NUMBER OF CONTACT PERSON IN CASE OF EMERGENCY	9855488112	EMAIL ID OF CONTACT PERSON IN CASE OF EMERGENCY	stsoldierschool@yahoo.com
TOTAL NUMBER OF DOCTORS IN SCHOOL CLINIC	1	TOTAL NUMBER OF NURSES IN SCHOOL CLINIC	1
TOTAL NUMBER OF BEDS IN SCHOOL CLINIC	2	LEVEL OF INVOLVEMENT OF SCHOOL IN CBSE ACTIVITIES	ACTIVE
DO THE TEACHERS GET PROPER GRADE LIKE PGT/TGT AS PER THE CLASSES THEY ARE ENTITLED TO TEACH?	YES	DO THE TEACHERS AND STAFF GET THEIR SALARY WITHIN FIRST WEEK OF THE MONTH?	YES

DOES THE SCHOOL HAS EPF FACILITY FOR STAFF	YES	EPF REGISTRATION NUMBER	LDASR0022291000
MODE OF SALARY PAYMENT	bankpayment	NAME OF BANK WITH SALARY ACCOUNT	Punjab & Sind Bank
ARE THE SCHOOL ACCOUNTS AUDITED REGULARLY?	YES	PARENT TEACHERS ASSOCIATION AS PER NORMS	YES
ACADEMIC SESSION	APRIL TO MARCH	VACATION PERIOD	JUNE TO JULY
AUDITED BALANCE SHEET OF SCHOOL	VIEW (PdfHandler.aspx? FileName=G:\cbse\2018\oasisdemo\balance\25287.pdf)	STAFF STATEMENT OF SCHOOL	VIEW (PdfHandler.aspx? FileName=G:\cbse\2018\oasisdemo\staff\25287.pdf)
INCOME AND EXPENDITURE STATEMENT	VIEW (PdfHandler.aspx? FileName=G:\cbse\2018\oasisdemo\income\25287.pdf)	ACADEMIC CALENDAR OF SCHOOL	VIEW (PdfHandler.aspx? FileName=G:\cbse\2018\oasisdemo\academic\25287.pdf)
BEST PRACTICES OF SCHOOL			
Teachers training ,seminars to update the teachers regularly according to new techniques of Education. Eco Friendly Environment for Education involving students & teachers to save Environment.			

FEE STRUCTURE OF SCHOOL

25287--ST SOLDIER ELITE CONV SCH, JANDIALA GURU PUNJAB
Dated : 23/06/2018

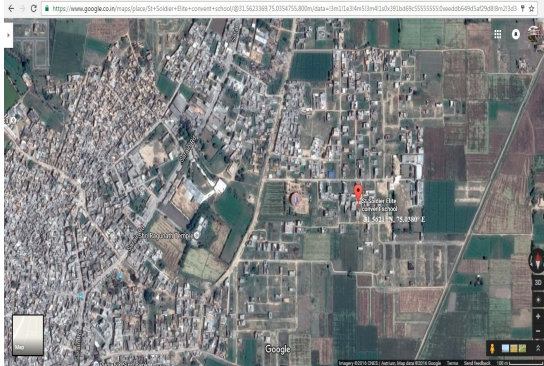
CLASS	ADMISSION FEE (in Rupees)	TUITION FEE (in Rupees)	YEARLY DEVELOPMENT CHARGES (in Rupees)	ANNUAL/MONTHLY OTHER CHARGES FOR OTHER FACILITIES (in Rupees)
PRIMARY	6500	1030	5450	2750
MIDDLE	6500	1060	5900	2750
SECONDARY	6500	1150	6150	3800
SENIOR SECONDARY	6500	1460	7550	5600

PHOTO OF SCHOOL

25287--ST SOLDIER ELITE CONV SCH, JANDIALA GURU PUNJAB
Dated : 23/06/2018

SCHOOL PHOTOS

GEO-TAGGED PHOTO



PLAYGROUND PHOTO



LIBRARY PHOTO



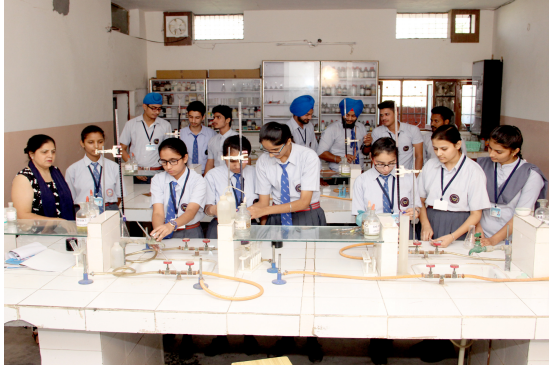
SCIENCE LAB PHOTO



PHYSICS LAB PHOTO



CHEMISTRY LAB PHOTO



BIOLOGY LAB PHOTO

